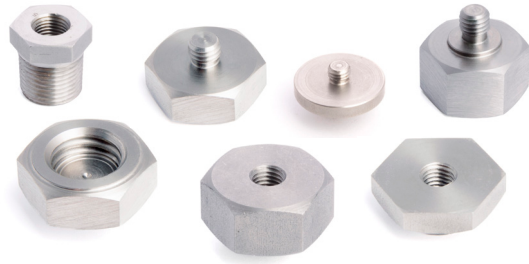






HS-AS Studs

adapters



Adapters to connect accelerometers to machine faces.

Mounting Studs provide a secure, permanent or semi-permanent point of connection

Part No.	Connection Point 1	Connection Point 2			
HS-AS006	Quick Fit Female	1/4"-28 UNF Male			
HS-AS009	M6 Female	M8 Male			
HS-AS026	10-32 UNF Male	M6 Male			
HS-AS028	Quick Fit Female 1/2" UNC	1/4"-28 UNF Male			
HS-AS030	M8 x 1.25 Female	1/8"BSPT Male			
HS-AS032	Quick Fit Female	M8 Male			
HS-AS039	Quick Fit Female 1/2" UNC	10-32 UNF Male			
HS-AS045	Quick Fit Female	M5 Female			
HS-AS088	Quick Fit Female 9/16" UNC	M5 Female			
HS-AS092	3/8" UNF Female	3/8" NPT Male			
HS-AS103	1/4"-28 UNF Female	1/4" NPT Male			
HS-AS107-M6	M6 Female	M6 Male			
HS-AS111	M8 Female	M8 Female			
HS-AS119	1/4"-28 UNF Female	1/4"-28UNF Male			
HS-AS121	1/4"-28 UNF Female	3/8"-16 UNC Male			